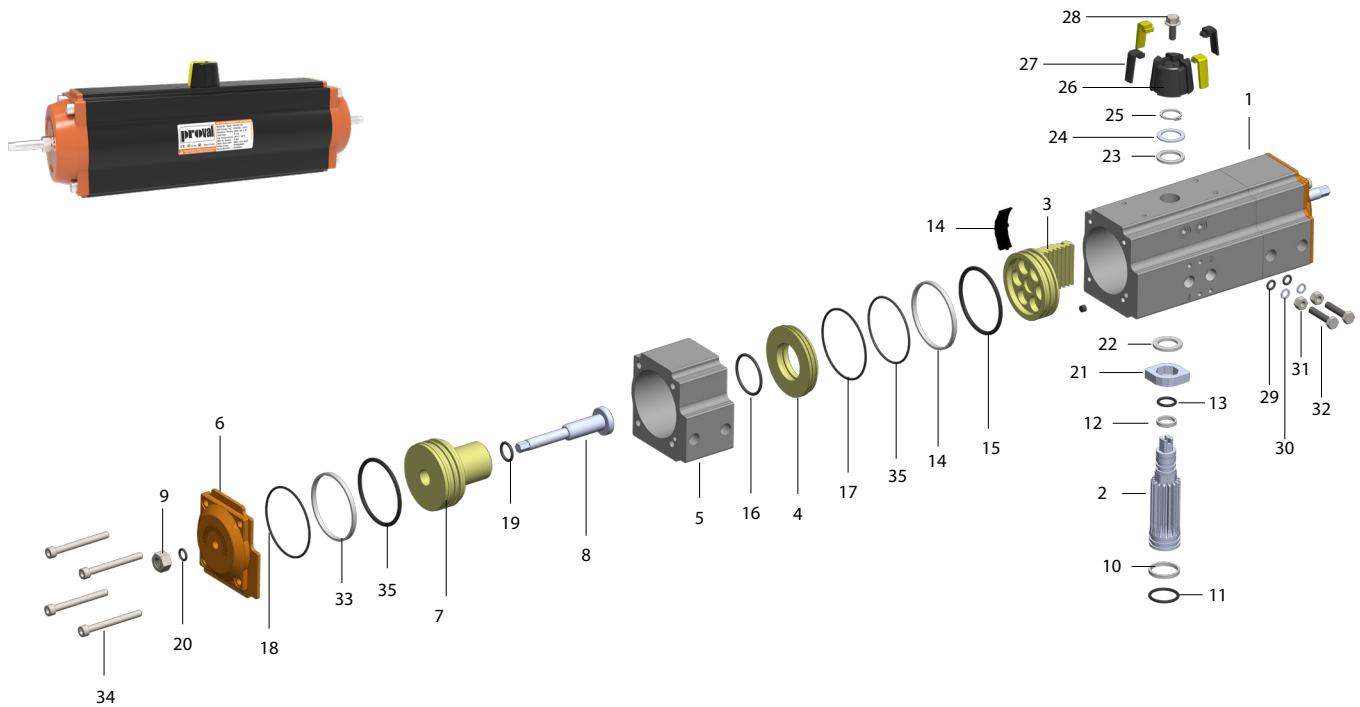


A213 Series 3 Position Pneumatic Actuators Part List



Part List

| No | Part Name | Material | Protection | Qty |
|----|---------------------|----------------------|-------------------|-----|
| 1 | Body | Alu Extrusion | Anodising | 1 |
| 2 | Pinion | Alloy Steel | ENP Coating | 1 |
| 3 | Piston | Alu Die Cast | ENP Coating | 2 |
| 4 | Body Mid Part | Aluminium | Anodising | 2 |
| 5 | Body Ext. Part | Alu Extrusion | Anodising | 2 |
| 6 | End Cap | Die Cast Alu | Alodyne&Polyester | 2 |
| 7 | Auxiliary Piston | Die Cast Alu | Alodyne Coating | 2 |
| 8 | Shaft | Stainless Steel | | 2 |
| 9 | Nut | Stainless Steel | | 2 |
| 10 | Lower Stem Bushing | Engineering Plastics | | 1 |
| 11 | Lower Stem O-Ring | NBR | | 1 |
| 12 | Upper Stem Bushing | Engineering Plastics | | 1 |
| 13 | Upper Stem O-Ring | NBR | | 1 |
| 14 | Guide Piston | Engineering Plastics | | 2 |
| 15 | Piston O-Ring | NBR | | 2 |
| 16 | Piston Shaft O-Ring | NBR | | 2 |
| 17 | Body O-Ring | NBR | | 2 |
| 18 | Cap O-Ring | NBR | | 2 |

| No | Part Name | Material | Protection | Qty |
|----|-------------------------|----------------------|-------------|-----|
| 19 | Piston Shaft O-Ring | NBR | | 2 |
| 20 | Shaft Cap O-Ring | NBR | | 2 |
| 21 | Cam | Alloy Steel | Galvanizing | 1 |
| 22 | Inner Washer | Engineering Plastics | | 1 |
| 23 | Washer | Engineering Plastics | | 1 |
| 24 | Metal Washer | Stainless Steel | | 1 |
| 25 | Circlip | Stainless Steel | | 1 |
| 26 | Indicator Body | Plastic | | 1 |
| 27 | Indicator Part | Plastic | | 4 |
| 28 | Indicator Screw | Stainless Steel | | 1 |
| 29 | Adjustment Screw O-Ring | NBR | | 2 |
| 30 | Adjustment Screw Washer | Stainless Steel | | 2 |
| 31 | Nut | Stainless Steel | | 2 |
| 32 | Hexagon Bolt | Stainless Steel | | 2 |
| 33 | Outer Nut | Stainless Steel | | 2 |
| 34 | Cap Bolt | Stainless Steel | | 2 |
| 35 | O-Ring | NBR | | 2 |

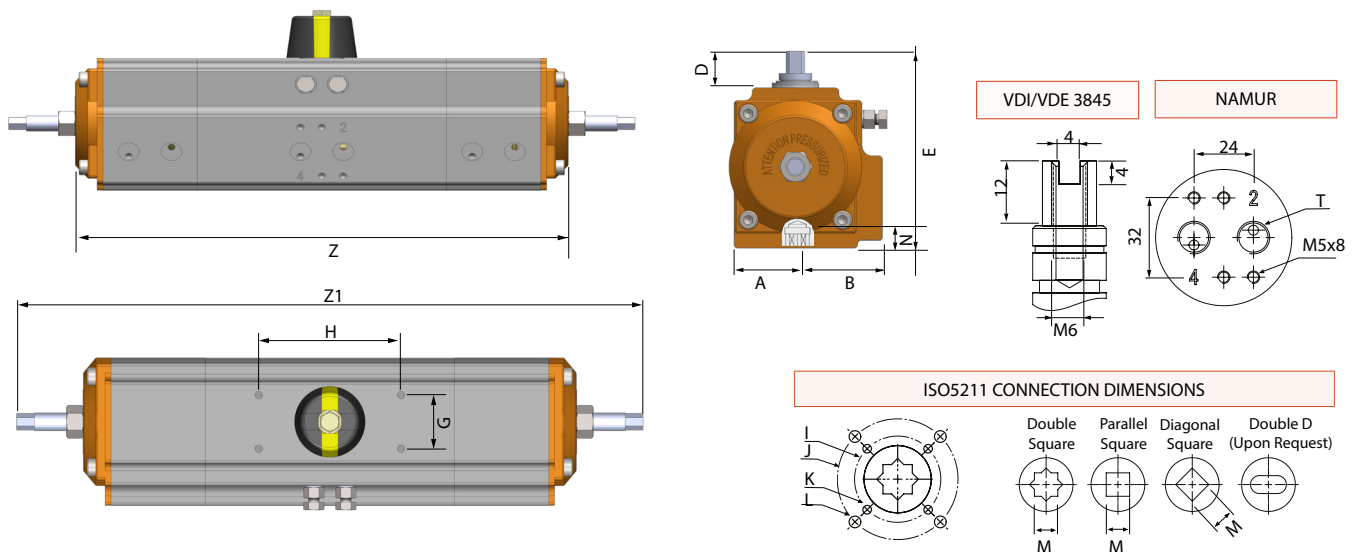


A213 Series 3 Position Pneumatic Actuators

A213 Series 3 position 90 degrees rotating rotary pneumatic actuators offers a midway position to be set in any desired position between 0 and 90 degrees by adjusting the set screws located outside of the end caps.

- Well suited for coarse-precise dosing filling, batching operations
- Field adjustable
- Double and single acting
- Namur accessory mounting configuration
- 180 degree rotation on request

A213 Series 3 Position Pneumatic Actuators Dimensions



Dimensions(mm)

| Model | A | B | E | D | G | H | I | J | K | L | M | N | Z | Z1 (0°) | Z1 (90°) | T |
|--------|------|------|-------|----|----|----|------|------|--------|--------|---------|----|-----|---------|----------|-------|
| PA 52 | 30 | 41,5 | 92 | 20 | 30 | 80 | ø36 | ø50 | M5x8 | M6x10 | 9-11 | 14 | 283 | 413 | 444 | G1/4" |
| PA 63 | 36 | 47 | 107,5 | 20 | 30 | 80 | ø50 | ø70 | M6x10 | M8x13 | 9-11-14 | 18 | 305 | 445 | 483 | G1/4" |
| PA 75 | 42 | 53 | 119,5 | 20 | 30 | 80 | ø50 | ø70 | M6x10 | M8x13 | 11-14 | 18 | 342 | 499 | 537 | G1/4" |
| PA 83 | 46 | 57 | 128,7 | 20 | 30 | 80 | ø50 | ø70 | M6x10 | M8x13 | 14-17 | 21 | 377 | 550 | 597 | G1/4" |
| PA 92 | 50 | 58,5 | 136,8 | 20 | 30 | 80 | ø50 | ø70 | M6x10 | M8x13 | 14-17 | 21 | 465 | 678 | 735 | G1/4" |
| PA 105 | 57,5 | 64 | 153 | 20 | 30 | 80 | ø70 | ø102 | M8x13 | M10x16 | 17-22 | 26 | 492 | 718 | 781 | G1/4" |
| PA 125 | 67,5 | 74,5 | 175 | 20 | 30 | 80 | ø70 | ø102 | M8x13 | M10x16 | 22 | 26 | 553 | 807 | 876 | G1/4" |
| PA 140 | 75 | 77 | 191,5 | 20 | 30 | 80 | ø102 | ø125 | M10x16 | M12x20 | 27 | 31 | 720 | 1051 | 1145 | G1/4" |
| PA 160 | 87 | 87 | 217 | 20 | 30 | 80 | ø102 | ø125 | M10x16 | M12x20 | 27 | 31 | 825 | 1209 | 1319 | G1/4" |

Torque Values (Nm)

Output torque values are identical to that of A210 Series. Please see torque charts on pages 62, 64, 65

Actuator Weights (Kg/Pc)

| Model | PA 52 | PA 63 | PA 75 | PA 83 | PA 92 | PA 105 | PA 125 | PA 140 | PA 160 |
|---------|-------|-------|-------|-------|-------|--------|--------|--------|--------|
| A213-DA | 3,2 | 4,8 | 6,2 | 7,5 | 11,4 | 13,5 | 20,6 | 27,4 | 43,4 |
| A213-SR | 3,3 | 4,9 | 6,4 | 7,8 | 11,9 | 14,3 | 22,0 | 29,8 | 47,7 |