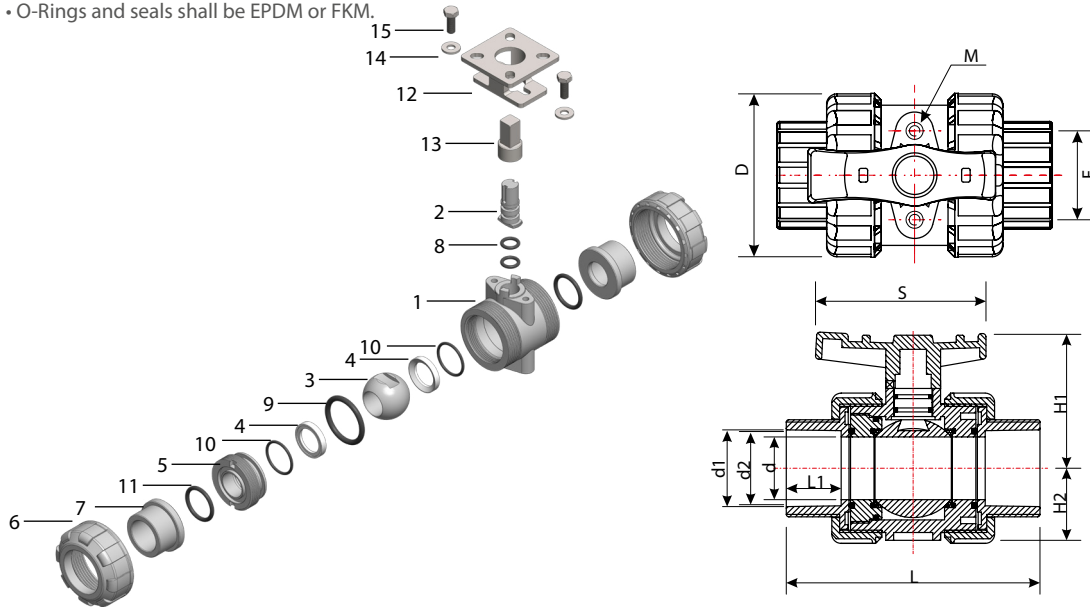


V209 Series U-PVC / PPRC True Union Socket Ball Valves - Acid & Water Type

- Available in sizes ranging from DN15 to DN65 with a 3-piece body constructed of U-PVC / PPRC and plain female ends for socket fusion joining.
- ISO 5211 compatible mounting bracket and drive coupling needed for pneumatic or electric actuator assembly available upon request.
- Molded lugs on the handle facilitates dismounting of seal carrier.
- Ideal for use in commercial and general industrial applications such as sewage and water treatment, chemicals, swimming pools.
- Max allowable operating pressure 10 bar.
- O-Rings and seals shall be EPDM or FKM.



Material List

No	Part Name	Qty	Water Type	Acid Type	No	Part Name	Qty	Water Type	Acid Type	No	Part Name	Qty	Water Type	Acid Type
1	Body	1	UPVC / PPRC	UPVC / PPRC	6	Union Nut	2	UPVC / PPRC	UPVC / PPRC	11	Union Seal	2	EPDM	VITON
2	Stem	1	UPVC / PPRC	UPVC / PPRC	7	End Connector	2	UPVC / PPRC	UPVC / PPRC	12	Mounting Bracket	1	SS304	SS304
3	Ball	1	UPVC / PPRC	UPVC / PPRC	8	Stem O-Ring	2	EPDM	VITON	13	Stem Coupler	1	SS304	SS304
4	Seal Carrier	2	PTFE	PTFE	9	Body Seal	1	EPDM	VITON	14	Washer	2	SS304	SS304
5	Union Bush	1	UPVC / PPRC	UPVC / PPRC	10	Ball Seat O-Ring	2	EPDM	VITON	15	Bolt	2	SS304	SS304

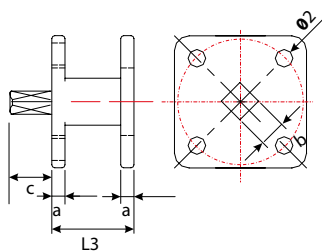
Dimensions(mm)

Size Inch/DN	d	d1	d2	D	L	L1	S	H1	H2	F	M
1/2" (15)	15	20,3	20,1	53	104	22,5	65,8	49	24,5	31	M6
3/4" (20)	20	25,3	25,1	61	115	26	78,6	60	29,5	33	M6
1" (25)	25	32,3	32,1	71	131	30	86,7	68	34	40	M6
1 1/4" (32)	32	40,3	40,1	83	147	32	97,4	76	38	52	M6
1 1/2" (40)	40	50,3	50,1	96	164	35	108,6	85	45	52	M8
2" (50)	50	63,3	63,1	116	210	40	132	97	55	70	M8
2 1/2" (65)	65	75,3	75,1	150	240	46	150	180	70	83	M8
3" (80)	75	90,3	90,1	171	305	69,5	213	144	86	-	M10

Technical Properties

- Max operating pressure 10 bar.
- During the assembly incompressible ball.
- For water and corrosive fluids alternative seal and O-Ring options.
- With ISO top flanged for actuator assembly.

Bracket Dimensions



Size (Inch/DN)	b	ISO 5211	Ø2	a	L3	Torque (Nm)
1/2" (15)	9	F04	6	4,5	28	15
3/4" (20)	9	F04	6	4,5	28	21
1" (25)	11	F04-F05	7	5	50	24
1 1/4" (32)	11	F04-F05	7	5	50	33
1 1/2" (40)	11	F05	8	6	50	40
2" (50)	11	F05	8	6	50	52
2 1/2" (65)	17	F07-F10	10-12	6	70	90

Note: Torque values given above are based on liquid media.



PVC Ball Valve with ISO5211 Bracket



3 Way PVC Ball Valve