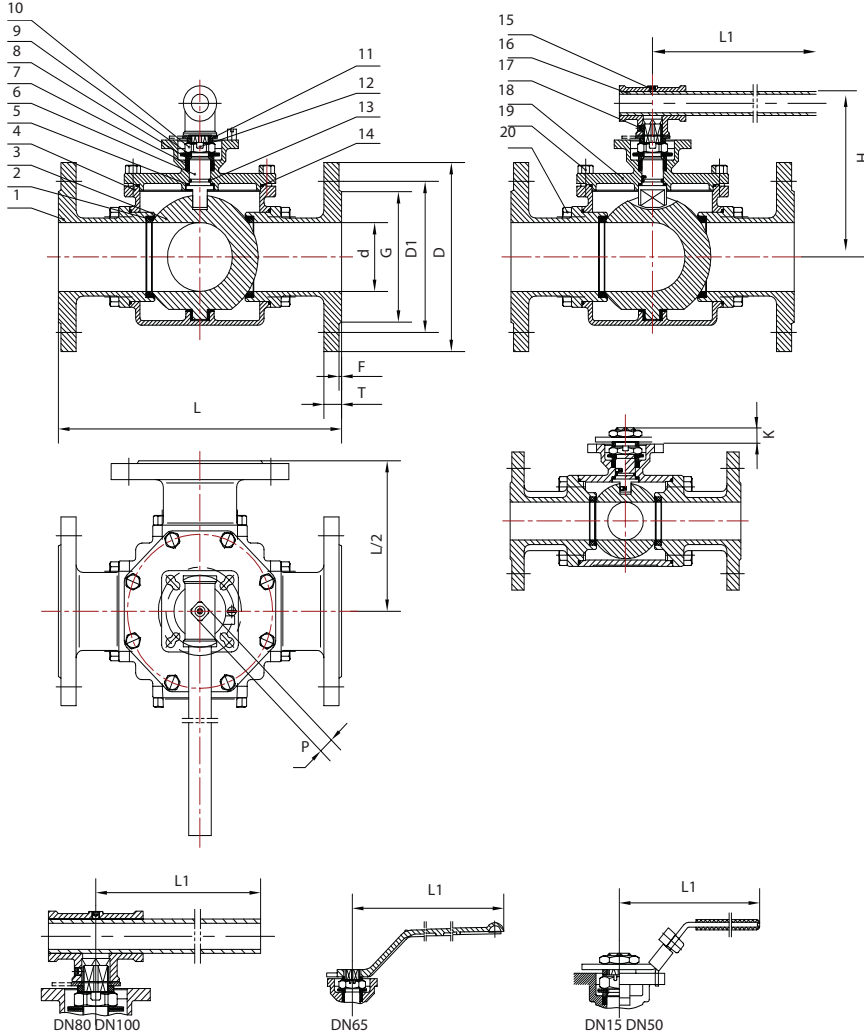




V217 (L) / V218 (T) Series 3 Way L/T Port Full Bore Ball Valves

V217 Series flanged ball valves are 3-way type with L-port configuration, while V218 Series ball valves are designed for 3-way flow control with T-port configuration. These 3-way ball valves, available in PN16/PN40 pressure ratings, feature ISO direct mounting flanges and anti-static design, providing full bore and reliable process control in both pneumatic and electric actuator applications.

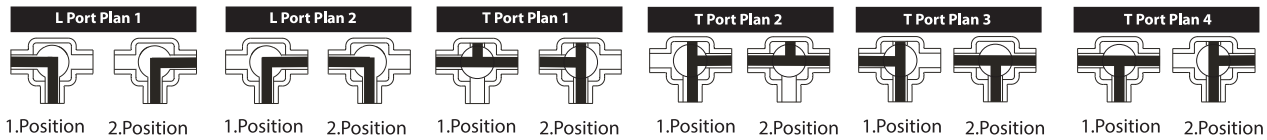


Material List

| No | Part Name | Material |
|----|---------------|---------------|
| 1 | Cap | AISI316 |
| 2 | Seat | R-PTFE |
| 3 | Ball | AISI316 |
| 4 | Body | AISI316 |
| 5 | Gasket | PTFE |
| 6 | Stem | AISI316 |
| 7 | Packing | PTFE |
| 8 | Packing Gland | AISI304 |
| 9 | Disc Spring | AISI304 |
| 10 | Stem Nut | AISI304 |
| 11 | Thrust Washer | AISI201 |
| 12 | O-Ring | Viton |
| 13 | Cap Gasket | PTFE |
| 14 | Screw Nail | ASTM A193-B8 |
| 15 | Handle | AISI304 |
| 16 | Screw Nail | ASTM A193-B8 |
| 17 | Cap | AISI316 |
| 18 | Hex Bolts | ASTM A193-B8 |
| 19 | Hex Bolts | ASTM A193-B9 |
| 20 | Hex Bolts | ASTM A193-B10 |



L / T Port Flow Plan Options



Dimensions(mm)

| DN | d | D | PN16 | | PN40 | | #150 | | G | T | F | L | H | L1 | P | K | ISO 5211 | Torque Values (Nm) | Weight (Kg) |
|-----|----|-----|------|-------|------|-------|-------|----------|-----|----|---|-----|-----|-----|----|----|-----------|--------------------|-------------|
| | | | D1 | n-0d1 | D1 | n-0d1 | D1 | n-0d1 | | | | | | | | | | | |
| 15 | 15 | 95 | 65 | 4-14 | 65 | 4-14 | 60,3 | 44-15,75 | 45 | 16 | 2 | 152 | 77 | 130 | 9 | 9 | F03 / F04 | 9 | 3,4 |
| 20 | 20 | 105 | 75 | 4-14 | 75 | 4-14 | 69,8 | 44-15,75 | 58 | 18 | 2 | 167 | 84 | 161 | 11 | 11 | F04 / F05 | 14 | 4,8 |
| 25 | 25 | 115 | 85 | 4-14 | 85 | 4-14 | 79,4 | 44-15,75 | 68 | 18 | 2 | 180 | 93 | 163 | 11 | 11 | F04 / F05 | 16 | 5,9 |
| 32 | 32 | 140 | 100 | 4-18 | 100 | 4-18 | 88,9 | 44-15,75 | 78 | 18 | 2 | 190 | 113 | 209 | 14 | 15 | F05 / F07 | 26 | 10,6 |
| 40 | 40 | 150 | 110 | 4-18 | 110 | 4-18 | 98,4 | 44-15,75 | 88 | 18 | 3 | 212 | 121 | 209 | 14 | 15 | F05 / F07 | 32 | 12,6 |
| 50 | 49 | 165 | 125 | 4-18 | 125 | 4-18 | 120,6 | 44-19,05 | 102 | 20 | 3 | 230 | 126 | 209 | 14 | 15 | F05 / F07 | 60 | 19,5 |
| 65 | 62 | 185 | 145 | 4-18 | 145 | 4-18 | 139,7 | 44-19,05 | 122 | 18 | 3 | 290 | 175 | 450 | 17 | 19 | F07 / F10 | 92 | 28,2 |
| 80 | 75 | 200 | 160 | 8-18 | 160 | 8-18 | 152,4 | 44-19,05 | 138 | 20 | 3 | 310 | 188 | 500 | 17 | 19 | F07 / F10 | 121 | 39,6 |
| 100 | 99 | 220 | 180 | 8-18 | 190 | 8-22 | 190,5 | 8-19,05 | 162 | 20 | 3 | 350 | 211 | 550 | 17 | 15 | F07 / F10 | 180 | 63,8 |