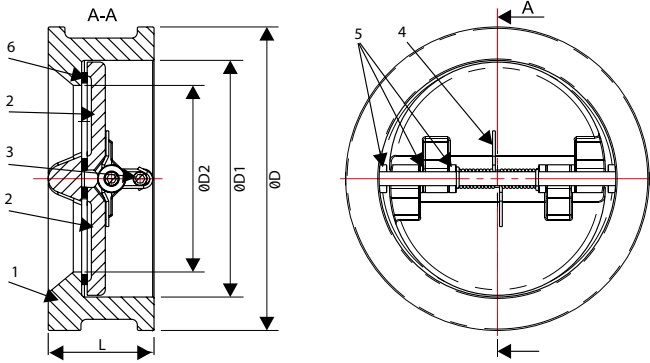




V703 Series Dual Plate Check Valves

Available in sizes from DN50 to DN600 with two spring-loaded D-shaped discs. Designed to be clamped between flanges in either vertical or horizontal position. Travel of the disc from the fully open to the closed position is smaller than in single plate check valves therefore the response of the valve to retarding flow is very fast. Low Noise/Less restriction to flow in the full open position/substantially lower pressure drop suitable to use with general service piping systems, water, oil, gasoline, chemicals compressible gasses and compressed air.



Design Standards

Design Standard	API6D
Flange	ANSI 150, PN6, 10, 16, 25, 40
Face to Face	EN558-1 / API594

Dimensions (mm)

Size (DN)	ØD	ØD1	ØD2	L	
				EN 558-1	API 594 #150
50	107	65	43,3	43	60
65	127	80	60,2	46	67
80	142	94	66,4	64	73
100	162	117	90,8	64	73
125	192	145	116,9	70	-
150	218	170	144,6	76	98
200	273	224	198,2	89	127
250	328	265	233,7	114	146
300	378	310	279,05	114	181
350	438	360	327,87	127	184
400	489	410	375,88	140	191
450	555	450	414,06	152	203
500	594	505	467,83	152	219
600	690	624	569,59	178	222

Material List

No	Part Name	Materials
1	Body	GG25, GGG40, AISI304, AISI316
2	Disc	GGG40, AISI304, AISI316, Bronze
3	Hinge Pin	AISI316
4	Spring	AISI316
5	Washer	PTFE
6	Seat	EPDM, NBR, PTFE, Viton

Pressure Drop Curve

