



V800 Series Pneumatic Pinch Valves

Available in sizes ranging from DN40 to DN250. Valve body serves as a built-in actuator, eliminating the need for use of costly actuators.

Ideally suited to be used as a shut-off or throttling valve mainly in mining, chemical, waste/water treatment and conveying applications involving abrasive or corrosive slurries, powders, chemicals, coarse particles or fibrous substances.

Offered in "Normally Open" or "Normally Closed" configurations, requires only a 3/2 way or a pilot operated control valve. Designed to allow quick and easy sleeve replacement thus reducing maintenance costs.

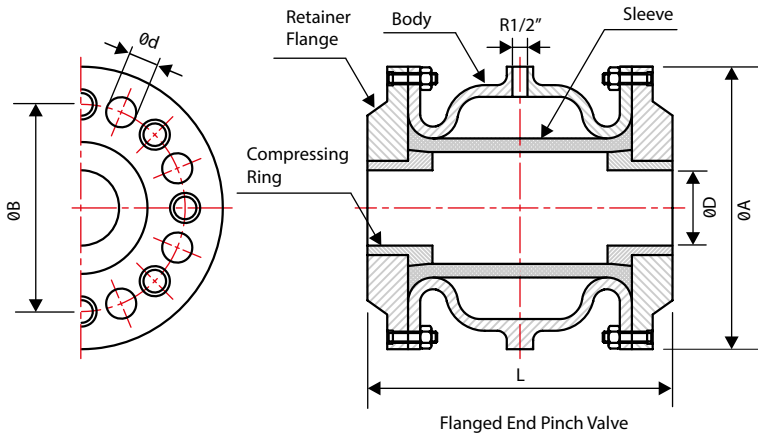
Leak free performance in both direction even on trapped solids. In order to ensure tight closure, air supply to close the valve must be approximately 1,5 bar higher than line pressure.



Flanged Pneumatic Pinch Valves

Pinch Valves - Flanged End Connection (DN40-DN250)

Body Construction Material : Die Cast Aluminum Body / Ductile Iron



Dimensions(mm)

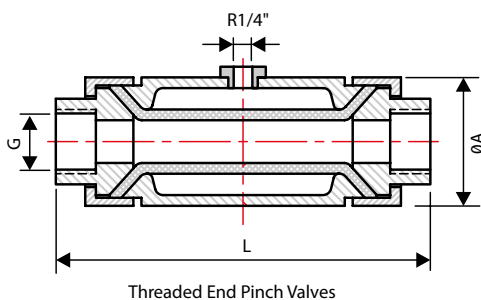
| DN | ØD | L | ØA | ØB | Ød | n |
|-----|-----|-----|-----|-----|----|----|
| 40 | 40 | 155 | 150 | 110 | 18 | 4 |
| 50 | 60 | 166 | 165 | 125 | 18 | 4 |
| 65 | 60 | 183 | 185 | 145 | 18 | 4 |
| 80 | 75 | 220 | 200 | 160 | 18 | 8 |
| 100 | 100 | 280 | 220 | 180 | 18 | 8 |
| 125 | 120 | 348 | 250 | 210 | 18 | 8 |
| 150 | 145 | 418 | 285 | 240 | 22 | 8 |
| 200 | 190 | 555 | 340 | 295 | 22 | 8 |
| 250 | 250 | 610 | 390 | 350 | 22 | 12 |

Associated Accessories ,

- 3/2 Way Function Solenoid Valves
- Air Filter&Regulator Units
- Quick Exhaust Valves

Pinch Valves-Internal Threaded End Connection (1/2" - 2")

Body Construction Material : Carbon Steel / St.Steel



Dimensions(mm)

| Size (DN) | G | L | ØA |
|-----------|--------|-----|-----|
| 15 | 1/2" | 135 | 60 |
| 20 | 3/4" | 142 | 60 |
| 25 | 1" | 145 | 75 |
| 32 | 1-1/4" | 170 | 90 |
| 40 | 1-1/2" | 200 | 110 |
| 50 | 2" | 220 | 120 |